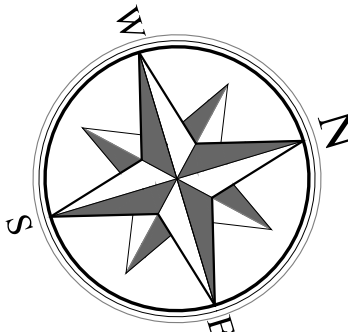


NOTES & SPECIFICATIONS

- DRIVEWAY:**
 1. CONCRETE DRIVE
 -3500 PSI Concrete; Broom Finish
 2. PAVER APRON
 -Blue '80'; Slate Finish (Color: Shale Gray)
 from Techo-Bloc
 3. PAVER INLAYS
 -Blue '80'; Slate Finish (Color: Shale Gray)
 from Techo-Bloc
- STONE PAVING:**
 1. DIMENSIONAL BLUESTONE; (Color: Select Blue)
 2. GRAVEL: River Jax decorative gravel
- FIRE PIT:**
 1. FIRE PIT
 -'Bento' Concrete
 from Paliform
 2. SLAB PAVER
 -Blue '60'; Slate Finish (Color: Shale Gray)
 from Techo-Bloc



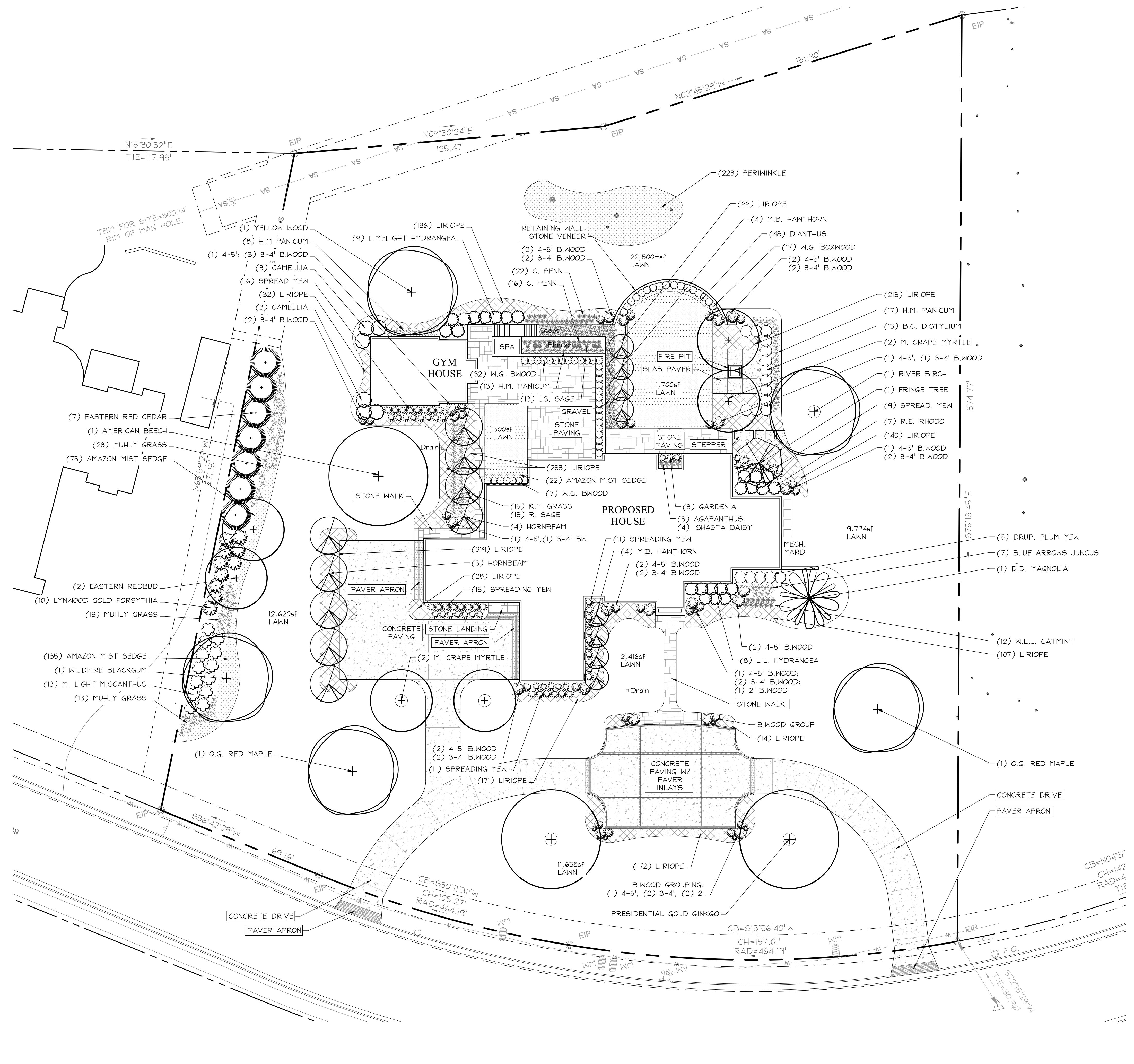
Know what's below.
Call before you dig.

PLANT LIST:

Key	Quantity	Botanical Name	Common Name	Plant Size	Notes
Shrubs					
56	1	<i>Buxus microphylla</i> 'Winter Green'	Winter Green Boxwood		Dense, full, matched
19	1	<i>Buxus sempervirens</i>	Boxwood	4'-5'	Dense, full, matched
25	1	<i>Buxus sempervirens</i>	Boxwood	3'-4'	Dense, full, matched
7	1	<i>Buxus sempervirens</i>	Boxwood	2'	Dense, full, matched
6	1	<i>Camellia</i> x 'Spring Awakening'	Spring Awakening Camellia		
5	1	<i>Cephalotaxus harringtonia</i> 'Drusacea'	Drusacea Plum Yew	24"	Well-branched, dense, matched
62	1	<i>Cephalotaxus harringtonia</i> 'Prostrata'	Spreading Plum Yew	24"	Dense, full, matched
13	1	<i>Distylium myricoides</i> 'Blue Cascade'	Blue Cascade Distylium	24" min.	Dense, full, matched
0	1	<i>Distylium myricoides</i> 'Emerald Heights'	Emerald Heights Distylium	30"	Dense, full, matched
10	1	<i>Forsythia x intermedia</i> 'Lynwood Gold'	Lynwood Gold Forsythia	24" min.	Dense, well-established, matched
3	1	<i>Gardenia jasminoides</i> 'Trotwood'	Trotwood Gardenia	3.5 gal.	Well-branched, dense, matched
9	1	<i>Hydrangea paniculata</i> 'Limelight'	Limelight Hydrangea	3.5 gal.	Well-branched, dense, matched
8	1	<i>Hydrangea paniculata</i> 'Little Lamb'	Little Lamb Hydrangea	3.5 gal.	Well-branched, dense, matched
7	1	<i>Rhododendron catawbiense</i> 'Roseum Elegans'	Rose Elegans Rhododendron	36"	Well-branched, dense, matched
Tree					
2	1	<i>Acer rubrum</i> 'October Glory'	October Glory Red Maple	2'-3' Cal.	well-branched, matched, specimen
1	1	<i>Betula nigra</i> 'Heritage'	Heritage River Birch	2'-3' Cal.	SINGLE OR MULTI-TRUNK, well-branched
9	1	<i>Carpinus betulus</i> 'Fastigiata'	Fastigiata European Hornbeam	2'-3' Cal.	SINGLE-TRUNK, full, dense, LIMBED UP 4 MIN.
2	1	<i>Cercis canadensis</i>	Eastern Redbud	2'-3' Cal.	well-branched, matched, specimen
1	1	<i>Chionanthus virginicus</i>	Native Fringe Tree	8-10'	Matched, well-branched, LIMBED UP 4 MIN.
1	1	<i>Cladrastis kentuckea</i>	American Yellowwood	3' Cal.	Well-formed, heavily branched
1	1	<i>Fagus grandifolia</i>	American Beech	4' Cal.	well-branched, specimen
2	1	<i>Ginkgo biloba</i> 'The President'	Presidential Gold Ginkgo	4' Cal.	SINGLE-TRUNK, specimen, male
7	1	<i>Juniperus virginiana</i>	Eastern Red Cedar	8'	Dense, well-branched, foliage to ground
4	1	<i>Lagerstroemia indica</i> 'Majestic'	Majestic Lavender Crape Myrtle	6'	Dense, well-branched, matched SINGLE-TRUNK
1	1	<i>Magnolia grandifolia</i> 'D.D. Blanchard'	D.D. Blanchard Magnolia	8-10'	Dense, foliage to ground
0	1	<i>Metasequoia glyptostroboides</i>	Dawn Redwood	3' Cal.	Well-formed, heavily branched, SINGLE-STEM
1	1	<i>Nyssa sylvatica</i> 'Wildfire'	Wildfire Tupelo Blackgum	8th. 2' cal.	Dense, well-branched, single-stem
0	1	<i>Palisota serrifolia</i> 'Warston Circle'	Excelsior London Planetree	3' Cal.	Dense, well-branched, specimen
8	1	<i>Raphiolepis x Montic</i> 'Majestic Beauty'	Majestic Beauty Indian Hawthorn	6'	Standard Form, SINGLE-TRUNK, limbed up 4'
Perennial					
5	1	<i>Agapanthus</i> 'Storm Cloud'	Storm Cloud African Lily		
48	1	<i>Dianthus</i> 'Bath's Pink'	Bath's Pink Dianthus	1 6th.	12" o.c.
4	1	<i>Leucanthemum x superbum</i> 'Becky'	Becky Daisy		
12	1	<i>Nepeta x faassenii</i> 'Junior Walker'	Junior Walker Catmint	1 gal.	
15	1	<i>Perovskia atriplicifolia</i>	Russian Sage	1 gal.	Dense, well-rooted
13	1	<i>Perovskia atriplicifolia</i> 'Little Spire'	Little Spire Russian Sage	1 gal.	
Ground Cover					
1688	1	<i>Liriope muscari</i> 'Royal Purple'	Royal Purple Liriope	24" o.c.	
223	1	<i>Vinca major</i>	Big Leaf Periwinkle		
Ornamental Grass					
15	1	<i>Calamagrostis acutiflora</i> 'Karl Foerster'	Karl Foerster grass	1 gal.	
232	1	<i>Carex obovata</i> 'Amazons Mist'	Amazons Mist Sedge	Qc.	
0	1	<i>Eragrostis elliptica</i>	Wind Dancer Love Grass	48" o.c.	
7	1	<i>Juncus</i> 'Blue Arrows'	Blue Arrows Juncus	1 gal.	
13	1	<i>Miscanthus sinensis</i> 'Morning Light'	Morning Light Maiden Grass	1 gal.	
41	1	<i>Muhlenbergia capillaris</i> 'Lance'	Lance Muhly Grass	1 gal.	
38	1	<i>Panicum virgatum</i> 'Heavy Metal'	Heavy Metal Switch Grass	1 gal.	
38	1	<i>Pennisetum alopecuroides</i> 'Cassian'	Cassian Dwarf Pennisetum	1 gal.	
0	1	<i>Sporobolus</i>	Prairie Dropseed	36" o.c.	

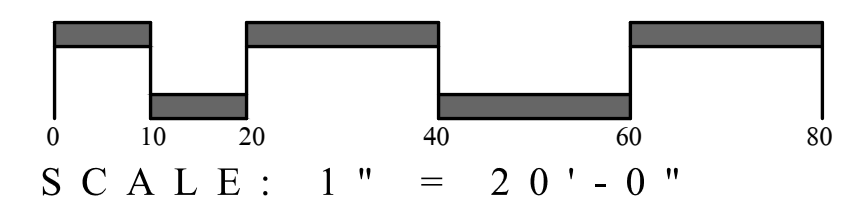
PLANTING NOTES

- Landscape Contractor to visit the site and accept the conditions prior to bidding and plant material installation.
- Landscape Contractor to obtain grading plan for coordination of final grades.
- Contact owner's representative for any plan or grade changes prior to construction.
- Landscape Contractor is responsible for all fine grading of lawn and planting areas disturbed during construction. Remove from site all temporary seeding/stabilization stones, gravel and all extraneous debris including roots and limbs.
- Landscape Contractor to bring to the attention of the owner any debris or poor soils remaining in planting areas after general construction and prior to any planting.
- Landscape Contractor to verify all underground utilities prior to installation of any plant material. Utilities shown on plan are for reference only and may not be all inclusive.
- Landscape Contractor to protect all existing structures (ie. curb and gutter, pavement, etc.) during installation of landscaping.
- Landscape contractor to coordinate with G.C. for any irrigation/lighting sleeving prior to sub-grade preparation of paved areas IF APPROPRIATE
- Landscape Contractor is responsible for providing topsoil in any planted traffic islands so there is a slight constant rise to the center of each island. (refer to grading plan for final elevations, by others)
- All plant beds to be tilled and amended to a depth of 8". Entire bed to be covered with 3" of shredded pine bark mulch.
- All plant beds to consist of (1) part existing soil, (1) part friable topsoil and (1) part pine bark soil conditioner.
- All beds to be tilled in their entirety. No pit planting will be accepted.
- Landscape Contractor shall furnish all quantities necessary to complete plantings as shown on drawings.
- Any plant material substitutions or adjustments are to be requested in writing to the owner's representative. No substitutions will be permitted without written notice by owner's representative.
- Landscape Contractor to contact owner for approval/denial of all plant stock prior to installation.
- All trees of the same variety to match in shape, form, and size where they are to be installed in groups, row's or as street trees.
- All trees shall be specimen quality and well shaped. Large deciduous and evergreen trees shall have tall central leader.
- All trees planted in grass areas shall have a 5' diameter mulch ring (typical.)
- All strapping and top 1/3 of wire basket must be cut away and removed from root ball prior to backfilling planting pit. Remove top 1/3 of the burlap from root ball.
- Edge of tree mulch ring to be a minimum 2' from any shrub bed edge or paved surface.
- Minor shifting and adjusting of proposed tree locations may required due to exact location of underground utilities. Landscape Contractor to contact owner's representative and city landscape inspector prior to relocation.
- All grass to plant bed borders to be neatly edged with a vertical edge (typical.)
- Prior to sodding, Landscape Contractor is to contact General Contractor for verification that all land disturbing activity (ie. trenching, grading, etc.) has been completed.
- Sod all disturbed areas within subject property and any areas within the right-of-way or an adjacent property disturbed during construction or of substandard turf condition. UNLESS OTHERWISE SPECIFIED
- Landscape Contractor to guarantee all plant material and work for a period of one year from acceptance of work by owner.
- See this sheet for planting details.



NEW RESIDENCE
GREENSBORO, NC

REVISION DATE:
 DATE: NOVEMBER 18, 2019
 SCALE: 1" = 20'-0"
 SHEET TITLE: LANDSCAPE PLAN
 SHEET NUMBER:



L 1.00